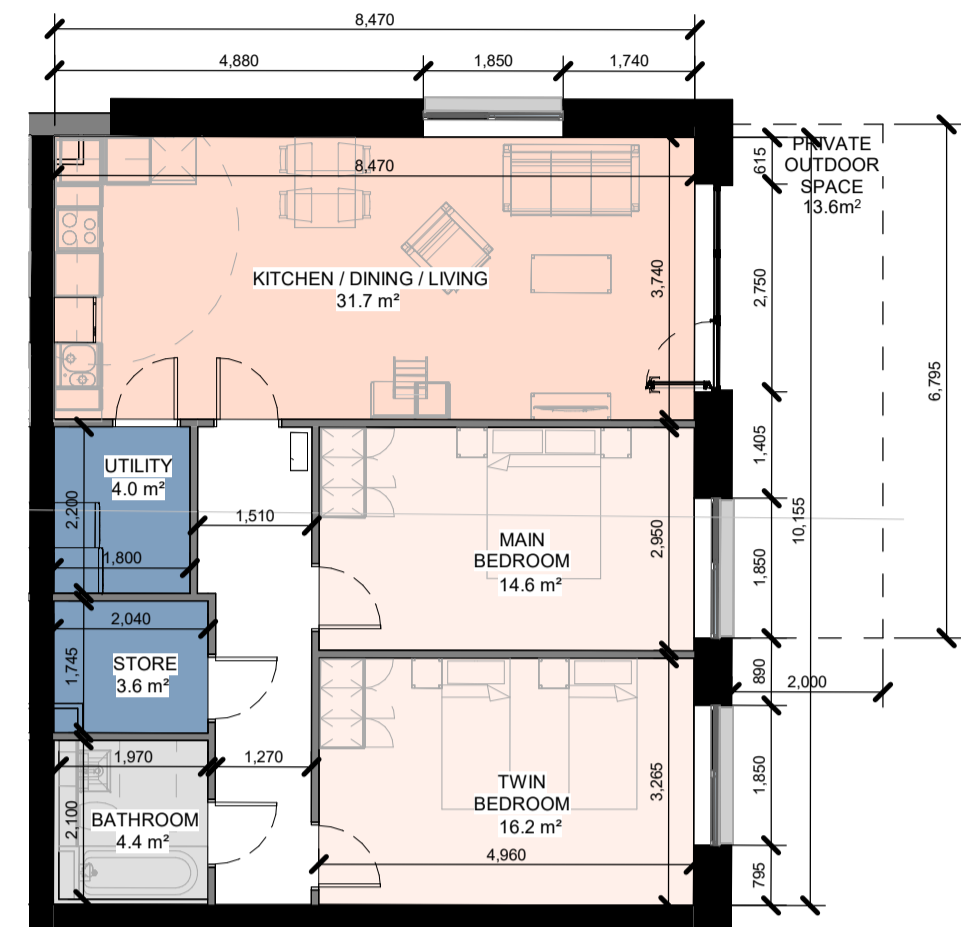


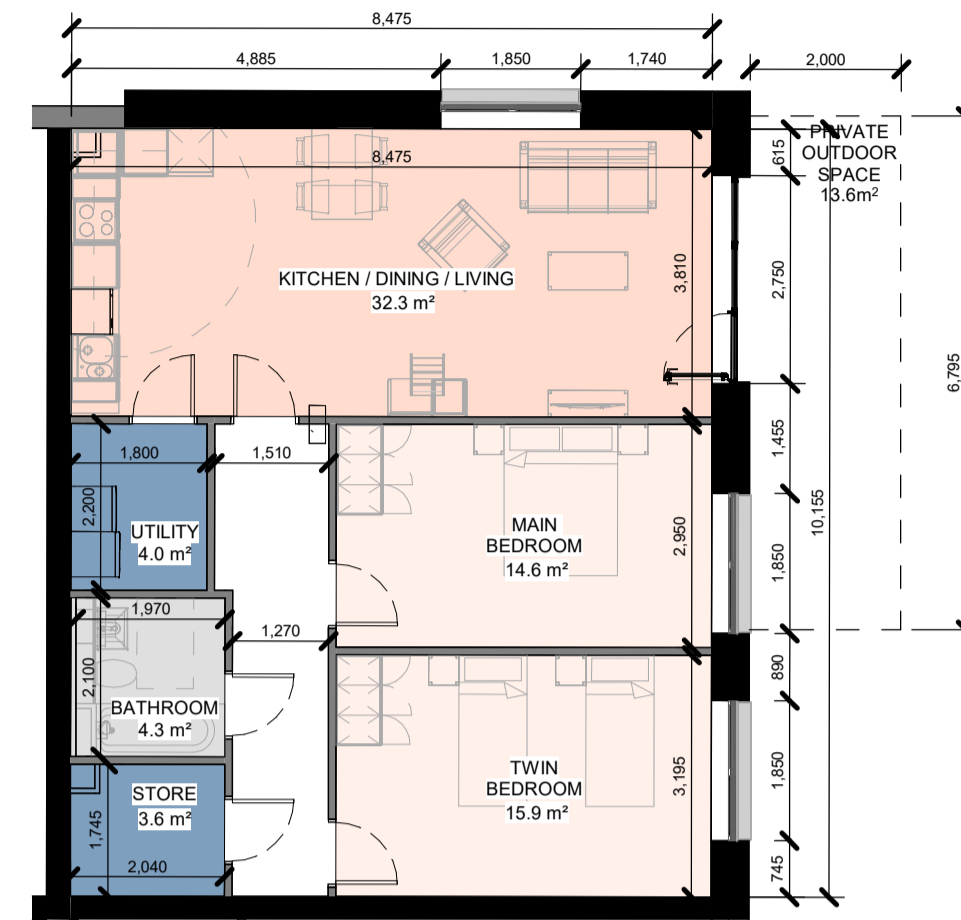
2 Bed 4P (A)	
Number	Level
A-L00-01	L00 - Ground Floor
B-L00-01	L00 - Ground Floor
E-L00-01	L00 - Ground Floor
Grand total: 3	

Apt Type 2 Bed 4P (A) GROSS AREA: 80m²  
1 : 100



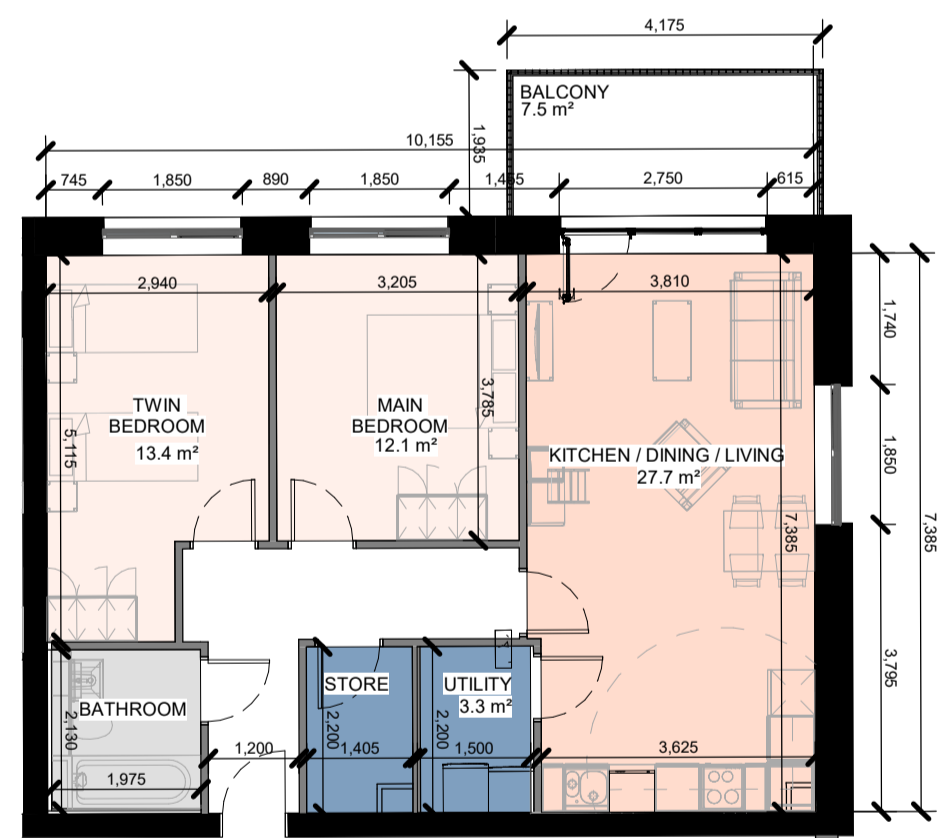
2 Bed 4P (B)	
Number	Level
A-L00-05	L00 - Ground Floor
B-L00-05	L00 - Ground Floor
C-L00-09	L00 - Ground Floor
D-L00-06	L00 - Lower Ground Floor
E-L00-05	L00 - Ground Floor
E-L00-06	L00 - Ground Floor
E-L00-08	L00 - Ground Floor
E-L00-09	L00 - Ground Floor
Grand total: 10	

Apt Type 2 Bed 4P (B) GROSS AREA: 86m²  
1 : 100



2 Bed 4P (C)	
Number	Level
D-L00-01	L00 - Lower Ground Floor
Grand total: 1	

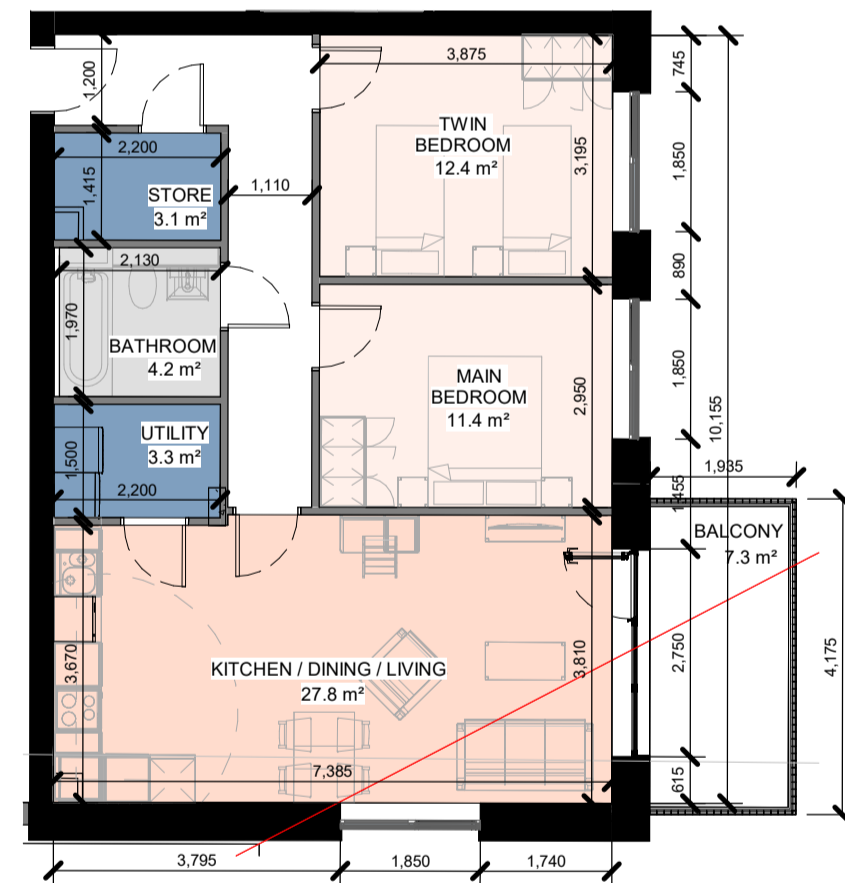
Apt Type 2 Bed 4P (C) GROSS AREA: 86 m²  
1 : 100



2 Bed 4P (D)	
Number	Level
A-L01-05	L01 - First Floor
A-L01-06	L01 - First Floor
A-L01-10	L01 - First Floor
A-L01-11	L01 - First Floor
A-L02-05	L02 - Second Floor
A-L02-06	L02 - Second Floor
A-L02-10	L02 - Second Floor
A-L02-11	L02 - Second Floor
A-L03-05	L03 - Third Floor
A-L03-06	L03 - Third Floor
A-L03-10	L03 - Third Floor
A-L03-11	L03 - Third Floor
A-L04-05	L04 - Fourth Floor
A-L04-06	L04 - Fourth Floor
A-L04-10	L04 - Fourth Floor
A-L04-11	L04 - Fourth Floor
A-L05-05	L05 - Fifth Floor
A-L05-06	L05 - Fifth Floor
A-L05-10	L05 - Fifth Floor
A-L05-11	L05 - Fifth Floor
A-L06-05	L06 - Sixth Floor
A-L06-06	L06 - Sixth Floor
B-L01-04	L01 - First Floor
B-L01-05	L01 - First Floor
B-L01-09	L01 - First Floor
B-L01-10	L01 - First Floor
B-L02-04	L02 - Second Floor
B-L02-05	L02 - Second Floor
B-L02-09	L02 - Second Floor
B-L02-10	L02 - Second Floor
B-L03-04	L03 - Third Floor
B-L03-05	L03 - Third Floor
B-L03-09	L03 - Third Floor
B-L03-10	L03 - Third Floor
B-L04-04	L04 - Fourth Floor
B-L04-05	L04 - Fourth Floor
B-L04-09	L04 - Fourth Floor
B-L04-10	L04 - Fourth Floor
B-L05-04	L05 - Fifth Floor
B-L05-05	L05 - Fifth Floor
B-L05-09	L05 - Fifth Floor
B-L05-10	L05 - Fifth Floor
B-L06-04	L06 - Sixth Floor
B-L06-05	L06 - Sixth Floor
B-L06-09	L06 - Sixth Floor
B-L06-10	L06 - Sixth Floor

Apt Type 2 Bed 4P (D) GROSS AREA: 75m²  
1 : 100

2 Bed 4P (D)	
Number	Level
B-L07-05	L07 - Seventh Floor
B-L07-06	L07 - Seventh Floor
C-L01-12	L01 - First Floor
C-L01-13	L01 - First Floor
C-L02-12	L02 - Second Floor
C-L02-13	L02 - Second Floor
C-L03-12	L03 - Third Floor
C-L03-13	L03 - Third Floor
C-L04-12	L04 - Fourth Floor
C-L04-13	L04 - Fourth Floor
C-L05-12	L05 - Fifth Floor
C-L05-13	L05 - Fifth Floor
C-L06-12	L06 - Sixth Floor
C-L06-13	L06 - Sixth Floor
D-L01-11	L01 - Upper Ground Floor
D-L01-12	L01 - Upper Ground Floor
D-L02-12	L02 - First Floor
D-L02-13	L02 - First Floor
D-L03-12	L03 - Second Floor
D-L03-13	L03 - Second Floor
D-L04-12	L04 - Third Floor
D-L04-13	L04 - Third Floor
D-L05-12	L05 - Fourth Floor
D-L05-13	L05 - Fourth Floor
D-L06-12	L06 - Fifth Floor
D-L06-13	L06 - Fifth Floor
E-L01-05	L01 - First Floor
E-L01-06	L01 - First Floor
E-L01-11	L01 - First Floor
E-L02-05	L02 - Second Floor
E-L02-06	L02 - Second Floor
E-L02-10	L02 - Second Floor
E-L02-11	L02 - Second Floor
E-L03-05	L03 - Third Floor
E-L03-06	L03 - Third Floor
E-L03-10	L03 - Third Floor
E-L03-11	L03 - Third Floor
E-L04-05	L04 - Fourth Floor
E-L04-06	L04 - Fourth Floor
E-L04-10	L04 - Fourth Floor
E-L04-11	L04 - Fourth Floor
Grand total: 88	



2 Bed 4P (E)	
Number	Level
C-L06-01	L06 - Ground Floor
C-L06-02	L06 - Ground Floor
C-L01-01	L01 - First Floor
C-L01-02	L01 - First Floor
C-L02-01	L02 - Second Floor
C-L02-02	L02 - Second Floor
C-L03-01	L03 - Third Floor
C-L03-02	L03 - Third Floor
C-L04-01	L04 - Fourth Floor
C-L04-02	L04 - Fourth Floor
C-L05-01	L05 - Fifth Floor
C-L05-02	L05 - Fifth Floor
C-L06-01	L06 - Sixth Floor
C-L06-02	L06 - Sixth Floor
D-L01-01	L01 - Upper Ground Floor
D-L01-02	L01 - Upper Ground Floor
D-L02-01	L02 - First Floor
D-L02-02	L02 - First Floor
D-L03-01	L03 - Second Floor
D-L03-02	L03 - Second Floor
D-L04-01	L04 - Third Floor
D-L04-02	L04 - Third Floor
D-L05-01	L05 - Fourth Floor
D-L05-02	L05 - Fourth Floor
D-L06-01	L06 - Fifth Floor
D-L06-02	L06 - Fifth Floor
Grand total: 26	

Apt Type 2 Bed 4P (E) GROSS AREA: 75m²  
1 : 100

**Notes:**  
 - Do not scale from this drawing. Use figured dimensions in all cases.  
 - Verify dimensions on site and report any discrepancies to the Architect immediately.  
 - This drawing is to be read in conjunction with the Architect's Specification.  
 - © This drawing is copyright and may only be reproduced with the Architect's permission.

**Drawing Notes:**

**ROOM LEGEND**

- KITCHEN/DINING/LIVING
- BEDROOM
- STORE/UTILITY
- BATHROOM

Rev.	Date	Drawn	MM	Issued for S22b Submission	Details of Issue / Revision
1	30/10/2025	MM	MM	Issued for S22b Submission	Details of Issue / Revision

**Issues & Revisions**



46 O'Connell Street  
 Limerick  
 V94 8D88  
 T: +353 (0) 6 127 6789  
 W: www.reddyarchitecture.com  
 E: info@reddyarchitecture.com

Client Details:  
**Kirkland Investments Ltd.**

Project Details:  
**Parkway Valley - Mixed Use Development**  
**Singland, Dublin Road, Limerick**

Drawing Title:  
**Site Wide Unit Typologies - Sheet 2**

Job No. <b>P24-308W</b>	Sheet Size: <b>A1_Landscape</b>	Scale @A1: <b>As indicated</b>
-------------------------	---------------------------------	--------------------------------

Issue Date: <b>07/05/2026</b>	Drawn By: <b>MM</b>	Reviewed By: <b>MH</b>
-------------------------------	---------------------	------------------------

Status: <b>S2</b>	Purpose of Issue: <b>LRD Application</b>
-------------------	--

Project - System - Spatial Zone - Level - Type - Originator - Role - Number	Revision
<b>PVAL-02-SW-XX-DR-RAU-AR-1019</b>	<b>P02</b>